

Coni Otto
Long & Foster Real Estate Inc.
Cell: 240-483-7556
Www.ConiOtto.com
Coni@ConiOtto.com



\$595,000



Findlay Model

- This beautiful home features:
 - — 4 bedrooms
 - — 2 1/2 baths
 - — 3 car garage
 - 15 ft. high arched openings to great room to dazzle viewers
 - Formal dining room easily accessible from large island kitchen
 - French doors in breakfast room opening into a versatile office
 - Convenient utility area off kitchen providing access to garage, half-bath and generous laundry
 - Private entrance into master suite which includes volume ceiling, built in dressers/linen, two closets

- **First Floor - 1,875 sq. ft.**
- **Second Floor 687 sq. ft.**
- **Basement - 1,875 sq. ft.**
- **Garage - 672 sq. ft.**

FIRST FLOOR — 1,875 SQ. FT.

SECOND FLOOR — 687 SQ. FT.

BASEMENT — 1,875 SQ. FT.

GARAGE — 672 SQ. FT.

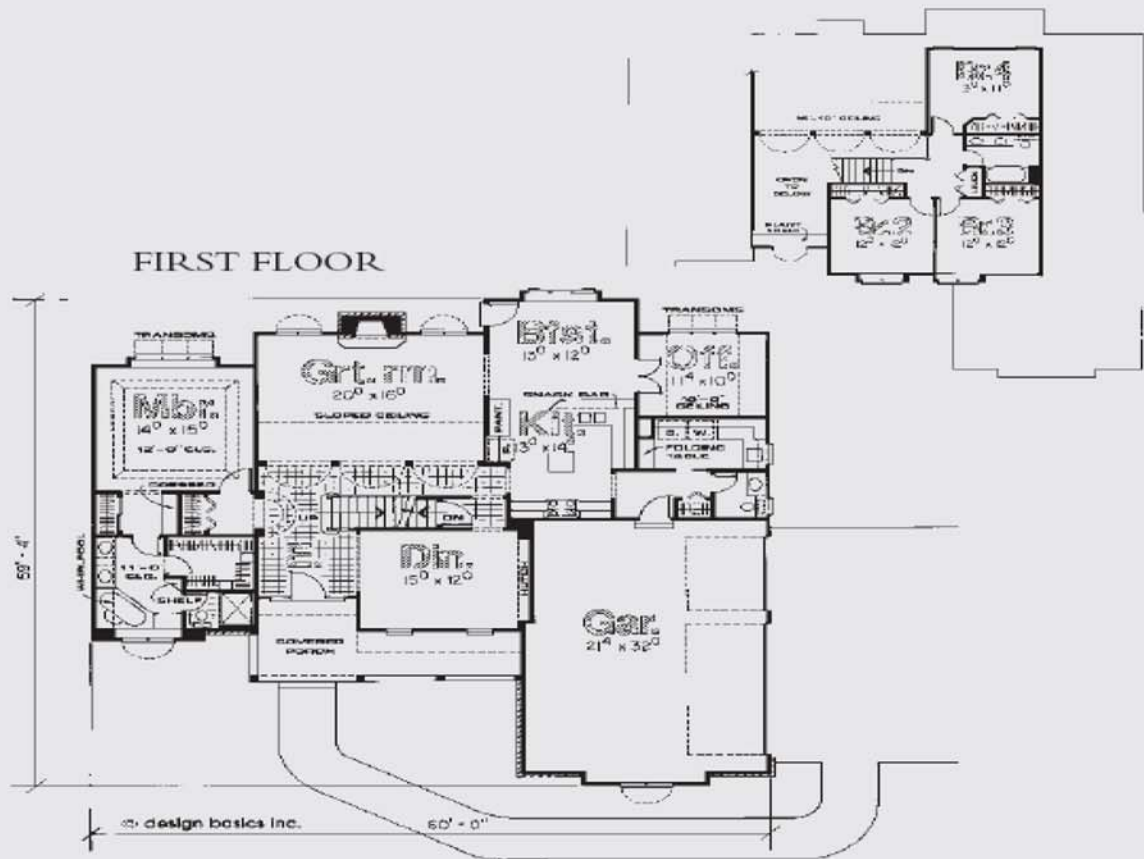
TOTAL LIVING AREA: 2,562 SQ. FT.



Coni Otto
Long & Foster Real Estate Inc.
Cell: 240-483-7556
Www.ConiOtto.com
Coni@ConiOtto.com



Findlay



Let GC Hicks Contractors build your new home today! Where quality and commitment is our first priority!

Www.gchickscontractors.com



Your Complete Contracting Team Under One Roof

Package A

- Black Appliances
- Formica counter tops
- Carpet
- Ceramic flooring
- Foundation is a slab/brass finish on hardware
- Vinyl windows
- Vinyl wrapped cabinets

Package B

- Stainless Steel Appliances
- Granite counter tops
- Hardwood
- Travertine flooring
- Brushed chrome finish on hardware
- Wood windows
- Foundation finished basement
- Recessed lighting
- Oak cabinets

